

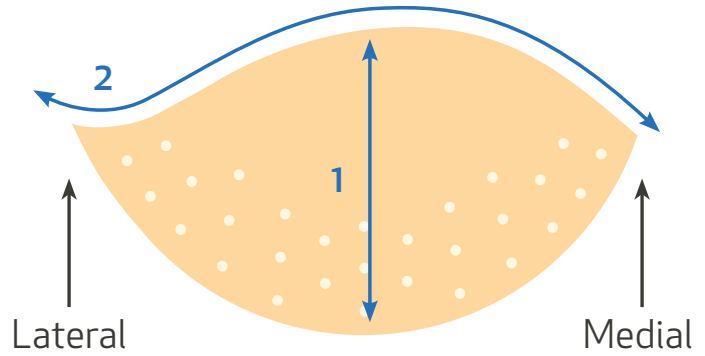
FlexHD[®]
PLIABLE SHAPED

ReShaping the Standards of
Plastic & Reconstructive Surgery



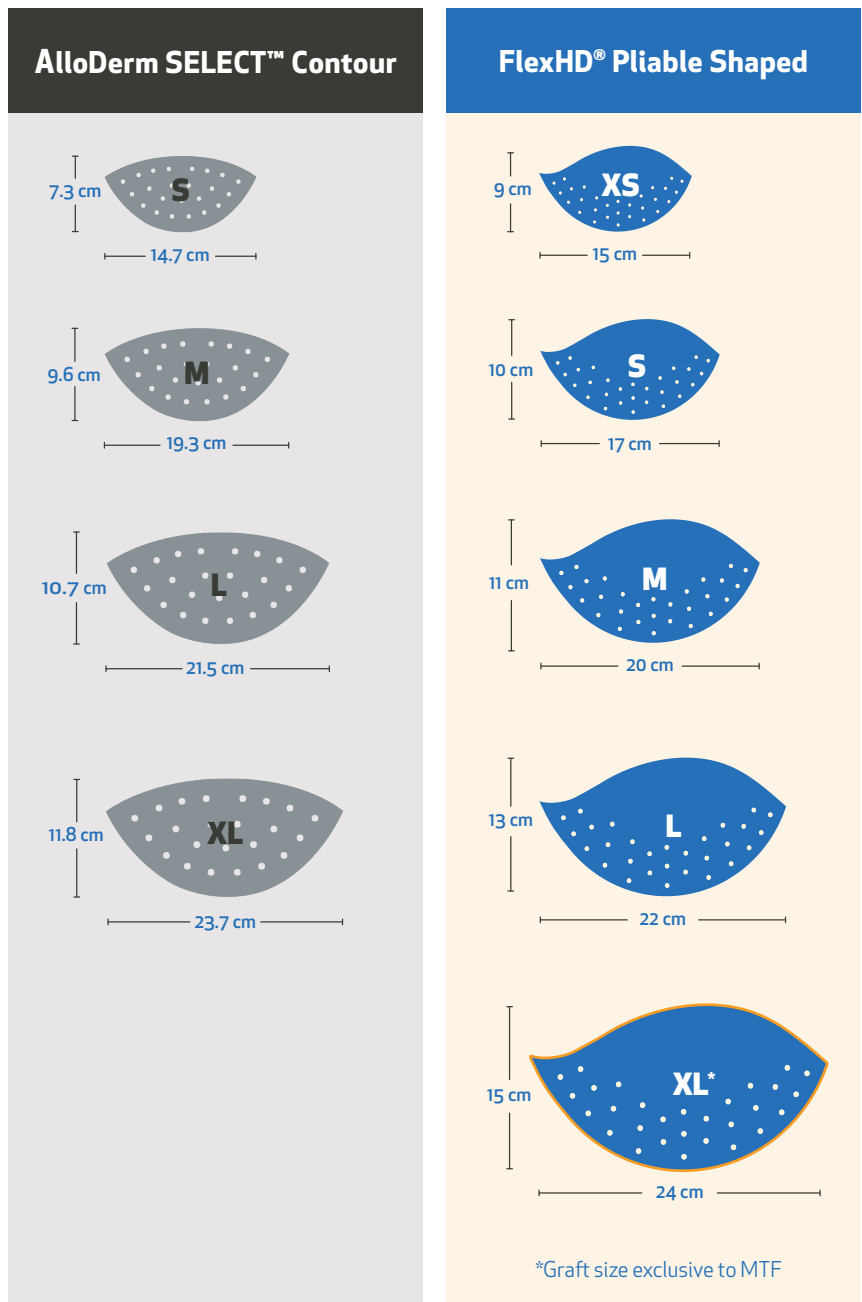
More Coverage Where You Need It Most

FlexHD® Pliable Shaped was engineered through 3D MRI modeling to provide the anatomical coverage you need for reconstructive procedures. With **additional height**, sufficient arc length can be achieved, while an **asymmetric wing** allows for more lateral coverage. This unique shape supports a **better anatomic fit** to ensure full apposition between the ADM and the overlying skin, which minimizes the risk of fluid accumulation.



Five Sizes That Cover All Your Applications

The chart below shows the additional coverage offered by FlexHD Pliable Shaped vs. comparably sized AlloDerm Contour grafts. Because of the added height, a smaller size of FlexHD Pliable can often be used, providing a cost savings to you and your patients.



A Better Design for Better Outcomes

Available in Both Perforated and Non-Perforated Configurations

Unlike AlloDerm Contour, which contains perforations throughout, FlexHD Pliable Shaped Perforated contains 2mm perforations **in the lower third of the graft only**. This maintains graft integrity and provides added protection against dehiscence while ensuring:

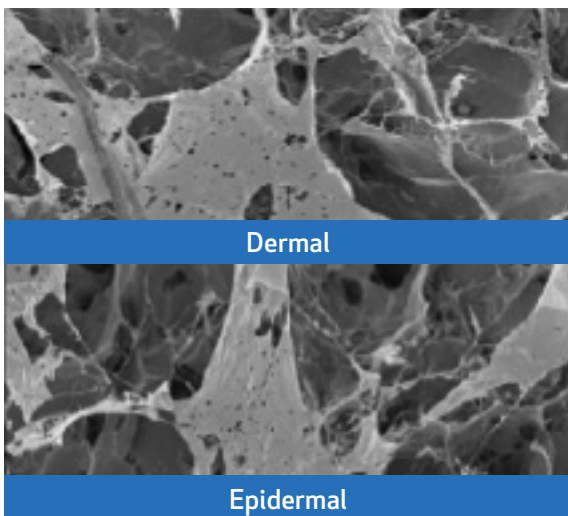
- Better drainage and egress of fluid
- Reduced seromas
- Better tissue in-growth and incorporation
- OR time savings

Shaped is a Cut Above—Just Like All of Our Pliable Grafts

Our FlexHD Pliable brands are the only Acellular Dermal Matix (ADM) products available to you and your patients that are **cut from the deeper, reticular layer of donated skin**. This deeper cut is just one of many unique features and benefits:

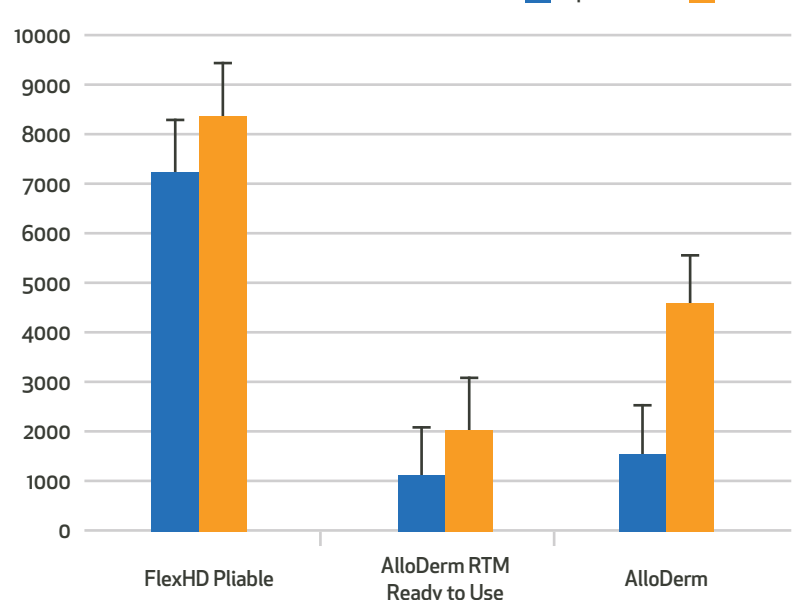
- Greater porosity for enhanced cellular ingrowth and subsequent tissue remodeling with no sidedness (see figure 1)
- More uniform and statistically higher fibroblast attachment on dermal and epidermal sides (see chart 1)
- 16% greater strength and 4x greater cell attachment than AlloDerm Regenerative Tissue Matrix products¹
- Aseptic processing per USP <71> with a Sterility Assurance Level of $(10^{-6})^2$
- No terminal sterilization, preserving the extracellular matrix and proteins necessary for angiogenesis and cellular incorporation
- Endotoxin testing as a release criteria, providing an extra level of graft safety assurance¹
- Proprietary precision cutting technology and quality inspection, ensuring graft thickness is uniform and consistent throughout
- More than 10 years of innovation and 100,00 lives healed with **ZERO** viral or bacterial disease transmission on a dermal allograft **EVER**

Figure 1



SEM images of both surfaces of FlexHD Pliable, demonstrating the same three-dimensional open architecture on each side of the graft. MTF data on file.

Chart 1 - In Vitro Fibroblast Attachment*



	Epidermal	Dermal
FlexHD Pliable	7,246	8,379
AlloDerm	1,548	4,568
AlloDerm RTM	1,039	2,028

*Values represent cell fluorescence units. Error is represented as standard error of the mean.

**AlloDerm Contour is processed the same as AlloDerm RTM

Ordering Information

FlexHD Pliable Shaped, Thin (0.7–1.7mm thick)

ITEM #	SIZE (L) x (W)	AREA
SP0001 (XS)	9 CM x 15 CM	90 SQ CM
SP1500 (S)	10 CM x 17 CM	117 SQ CM
SP0002 (M)	11 CM x 20 CM	148 SQ CM
SP0003 (L)	13 CM x 22 CM	189 SQ CM
SP0004 (XL)	15 CM x 24 CM	250 SQ CM

FlexHD Pliable Shaped, Thick (1.8–2.2mm thick)

ITEM #	SIZE (L) x (W)	AREA
SP2001 (XS)	9 CM x 15 CM	90 SQ CM
SP1502 (S)	10 CM x 17 CM	117 SQ CM
SP2002 (M)	11 CM x 20 CM	148 SQ CM
SP2003 (L)	13 CM x 22 CM	189 SQ CM
SP2004 (XL)	15 CM x 24 CM	250 SQ CM

FlexHD Pliable Shaped Perforated, Thin (0.7–1.7mm thick)

ITEM #	SIZE (L) x (W)	AREA
SF1000 (XS)	9 CM x 15 CM	90 SQ CM
SF1500 (S)	10 CM x 17 CM	117 SQ CM
SF2000 (M)	11 CM x 20 CM	148 SQ CM
SF3000 (L)	13 CM x 22 CM	189 SQ CM
SF4000 (XL)	15 CM x 24 CM	250 SQ CM

FlexHD Pliable Shaped Perforated, Thick (1.8–2.2mm thick)

ITEM #	SIZE (L) x (W)	AREA
SF2001 (XS)	9 CM x 15 CM	90 SQ CM
SF1502 (S)	10 CM x 17 CM	117 SQ CM
SF2002 (M)	11 CM x 20 CM	148 SQ CM
SF2003 (L)	13 CM x 22 CM	189 SQ CM
SF2004 (XL)	15 CM x 24 CM	250 SQ CM

FlexHD Pliable is Also Available in These Sizes for Plastic & Reconstructive Procedures:

FlexHD Pliable		
WIDTH x LENGTH (cm)	THICKNESS (mm)	PRODUCT CODE
4 x 12	0.7 – 1.7	HP1412
4 x 16	0.7 – 1.7	HP1416
6 x 16	0.7 – 1.7	HP1616
6 x 16	1.8 – 2.2	HP2616
8 x 16	0.7 – 1.7	HP1816
8 x 16	1.8 – 2.2	HP2816
8 x 20	0.7 – 1.7	HP1208

FlexHD Pliable Perforated		
WIDTH x LENGTH (cm)	THICKNESS (mm)	PRODUCT CODE
6 x 16	0.7 – 1.7	PF1616
6 x 16	1.8 – 2.2	PF2616
8 x 16	0.7 – 1.7	PF1816
8 x 16	1.8 – 2.2	PF2816
8 x 20	0.7 – 1.7	PF1208



125 May Street, Edison, NJ 08837 USA | (800) 433-6576 | +1 (732) 661-0202

1. "Development of a Novel Acellular Dermal Matrix (ADM) Designed Specifically for Plastic and Reconstructive Surgery." MTF Biologics Research & Development Dept. Updated 2021.
2. Phipps, A. et. Al. Chemical Sterilization of Allograft Dermal Tissues. Cell Tissue Bank DOI 10.1007/s10561-017-9647-0